

Grand Valley Public Participation Plan



525 S. 6th Street, 2nd Floor

Grand Junction, CO 81501

Phone: (970) 255-7188

<https://rtpo.mesacounty.us/>

September 22, 2025

Table of Contents

| | |
|---|-----------|
| Table of Contents | 2 |
| Glossary of Common Terms, Abbreviations, and Acronyms | 3 |
| Disclaimers | 4 |
| Accessibility Statement | 4 |
| Title VI Note | 4 |
| 01. Introduction to Transportation Planning and Public Participation | 5 |
| Transportation Planning Across the United States | 5 |
| Transportation Planning in the Grand Valley | 6 |
| 02. Public Participation Plan | 9 |
| Benefits of Public Participation | 9 |
| Development of the Public Participation Plan (PPP) | 9 |
| The RTPO's Approach to Public Participation | 10 |
| Public Participation Strategies Designed to Educate | 10 |
| Public Participation Strategies Designed to Engage | 11 |
| 03. Public Participation Plan Matrix | 12 |

Glossary of Common Terms, Abbreviations, and Acronyms

| | |
|-------|---|
| CDOT | Colorado Department of Transportation |
| FHWA | Federal Highway Administration |
| FTA | Federal Transit Administration |
| GVRTC | Grand Valley Regional Transportation Committee |
| GVT | Grand Valley Transit |
| MMCA | Mobile Mesa County Alliance |
| MPO | Metropolitan Planning Organization |
| PPP | Public Participation Plan |
| RTP | Regional Transportation Plan |
| RTPO | Mesa County Regional Transportation Planning Office |
| TAC | Technical Advisory Committee |
| TIP | Transportation Improvement Program |
| TPR | Transportation Planning Region |
| UPWP | Unified Planning Work Program |

Disclaimers

The preparation of this report has been financed in part through funds from the Federal Highway Administration and Federal Transit Administration, United States (U.S.) Department of Transportation, under the Metropolitan Planning Program, Section 104(f) of Title 23, U.S. Code. The contents of this report do not necessarily reflect the official views or policy of the U.S. Department of Transportation.

Accessibility Statement

The Mesa County Regional Transportation Planning Office strives to meet accessibility requirements in our work products to comply with federal, state, and local regulations, and as a matter of best practice. If you encounter accessibility barriers with this document, please contact us directly so we can make appropriate accommodations: rtpo@mesacounty.us.

Title VI Note

The Mesa County Regional Transportation Planning Office (RTPO) is committed to ensuring that no person is excluded from participation in, denied the benefits of, or subjected to discrimination under any program or activity receiving federal financial assistance on the basis of race, color, national origin, age, sex, disability, or income. This commitment is in accordance with Title VI of the Civil Rights Act of 1964, as amended (42 U.S.C. 2000d-1), the Civil Rights Restoration Act of 1987, and other non-discrimination authorities and Executive Orders.

As a recipient of federal financial assistance, the RTPO will not tolerate discrimination and will take all necessary and reasonable steps to ensure the fair and equitable treatment of all individuals in its programs and activities. We strive to provide meaningful access to our programs, services, and activities for all persons, including those with limited English proficiency.

Any person who believes they have been aggrieved by an unlawful discriminatory practice under Title VI may file a complaint with the RTPO. Information on how to file a complaint, including our complaint procedures, can be found online at: www.mesacounty.us/contact-us/title-vi-nondiscrimination-plan.

This Public Participation Plan, and all associated public involvement activities, are developed and implemented consistent with our Title VI obligations. We are dedicated to providing equitable opportunities for all members of the public to participate in the transportation planning process and to have their voices heard.

01. Introduction to Transportation Planning and Public Participation

Public and stakeholder participation is a core part of how transportation plans are made. While federal regulations set the basic requirements, the Mesa County Regional Transportation Planning Office (RTPO) strives to find better ways to inform and engage the public in every stage of the planning process. The RTPO conducts ongoing public involvement activities that:

- Boost public awareness and understanding of transportation issues
- Provide clear and timely information to the public
- Encourage early and ongoing involvement with the public and other interested groups
- Create opportunities for meaningful feedback

The Public Participation Plan (PPP) is not a fixed document and is designed to be flexible as new technology and society change. The RTPO is always looking for new ways to engage with the public, ensuring their input helps improve the Grand Valley's transportation system and works towards the vision found in the 2050 Regional Transportation Plan.

Vision for Transportation

Communities in the Grand Valley will be connected through a safe and accessible transportation system that is designed, built, and maintained for users of all ages and abilities who drive, walk, bike, roll, take transit, deliver freight, or travel by other modes.

~2050 Regional Transportation Plan

Transportation Planning Across the United States

Every urbanized area with a population over 50,000 residents is required by federal law to have a designated Metropolitan Planning Organization (MPO). MPO's work to ensure transportation projects and planning efforts are comprehensive, undertaken cooperatively, and regularly with federal, state, and local governments. The United States Department of Transportation relies on MPO's to ensure transportation plans and projects are the result of a credible planning process and federal funds support local priorities.

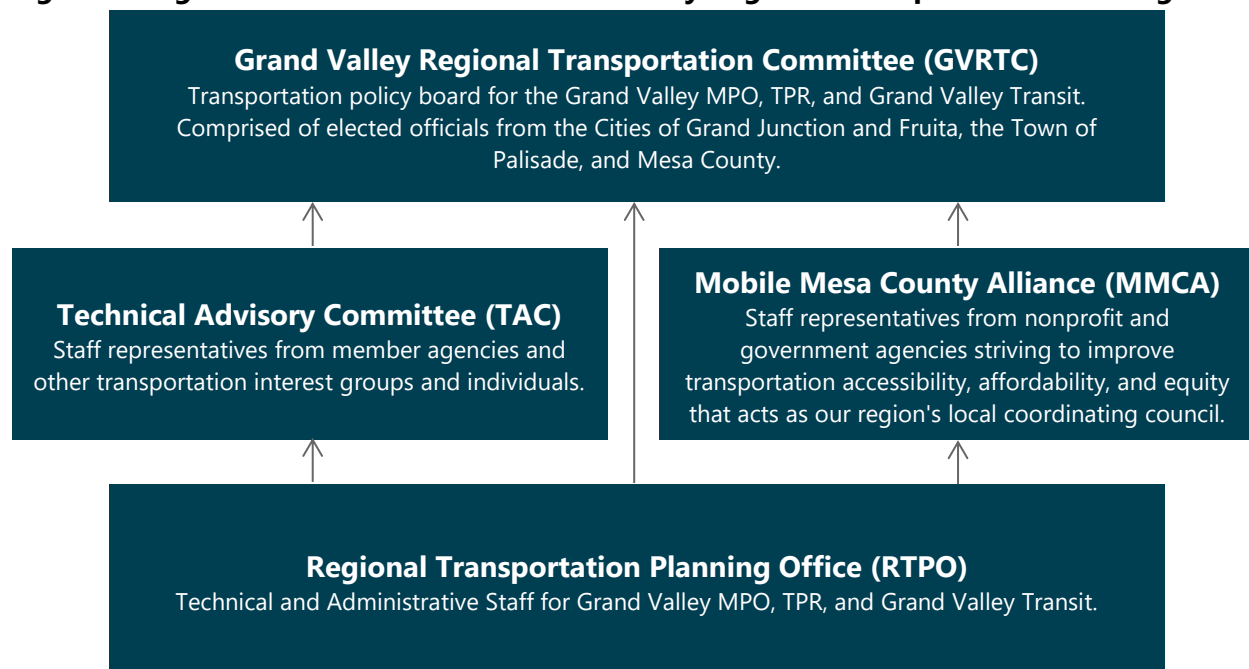
Transportation Planning in the Grand Valley

The RTPO is an umbrella organization serving Mesa County, Colorado as the: Grand Valley MPO, Grand Valley Transportation Planning Region (TPR), and Grand Valley Transit. As demonstrated in **Figure 1**, the RTPO is governed by the Grand Valley Regional Transportation Committee (GVRTC) which is the decision-making body of the RTPO. The GVRTC is informed by the Technical Advisory Committee (TAC) and Mobile Mesa County Alliance (MMCA). The RTPO is responsible for fulfilling the federal and state-mandated transportation planning requirements needed for the Grand Valley area to receive federal funding for transportation projects and transit operations.

The RTPO provides regional planning and programming services for all road users, including those who drive, walk, bike, roll, take transit, deliver freight, or travel by other modes. As shown in **Figure 3**, the Grand Valley MPO spans the urban areas of Mesa County including Grand Junction, Fruita, Palisade, and the urban portions of unincorporated Mesa County. The Grand Valley MPO serves an estimated population of 130,000 residents and spans over 126 square miles. The Grand Valley TPR boundary includes all of Mesa County, including Collbran and De Beque which include an estimated population of 160,000 residents and spans 3,341 square miles. Grand Valley Transit mostly covers the urban areas of Mesa County.

Organizational Structure

Figure 1: Organizational Structure of Grand Valley Regional Transportation Planning



Core Transportation Planning Products

As shown in **Figure 2**, the RTPO produces three major work products: a Regional Transportation Plan, a Transportation Improvement Program, and a Unified Planning Work Program. These documents guide much of the transportation planning process in Mesa County.

[Regional Transportation Plan](#)

A foundational responsibility of the RTPO is the development of a Regional Transportation Plan (RTP) for Mesa County. The RTP is updated every five years and looks 25-years into the future to provide a strategic direction to improve multimodal transportation networks by linking a regional vision to a long-term, financially constrained plan. This plan ultimately aims to address the mobility needs of Mesa County residents and those who may be traveling to, from, or through the region. Staff are continuously working on implementing the latest Grand Regional Transportation Plan.

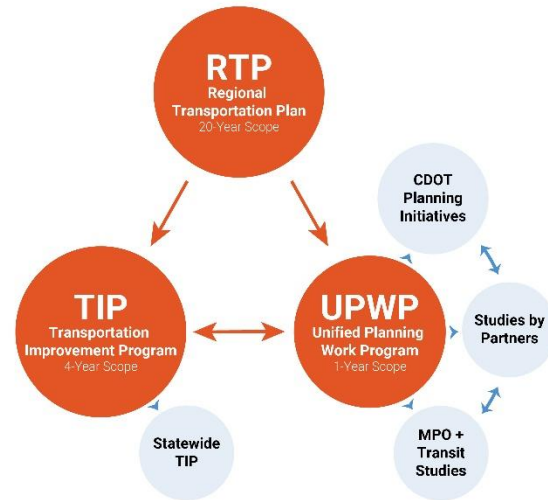


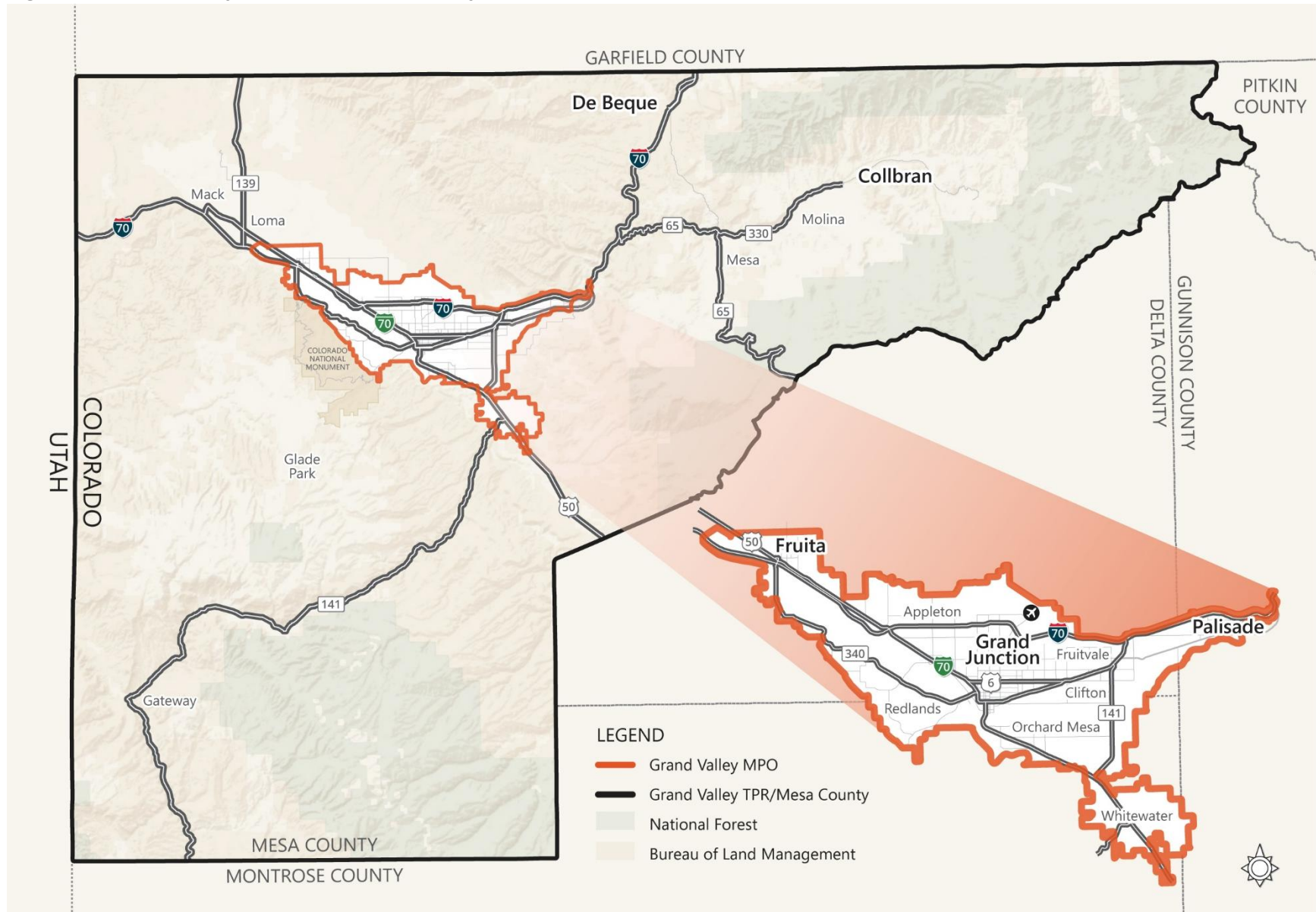
Figure 2: Core Transportation Planning Work Products

[Transportation Improvement Program](#)

The long-term guidance developed in the RTP informs a short-term program (four-years) that manages funding priorities for transportation projects in the Grand Valley. The Transportation Improvement Program (TIP) keeps track of major local, state, and federally funded projects.

[Unified Planning Work Program](#)

The Unified Planning Work Program (UPWP) is developed every two years and updated annually. The UPWP is used to document the transportation planning related tasks, progress, and accomplishments of the RTPO. It serves as a management tool, a program budget, directs the focus of staff, and includes anticipated financial resources and expenses. The UPWP helps assure that planning resources are allocated according to regional needs as identified by the Cities of Grand Junction and Fruita, the Town of Palisade, Mesa County, Grand Valley Transit, Colorado Department of Transportation (CDOT), Federal Highway Administration (FHWA), and Federal Transit Administration (FTA). The UPWP maintains the region's eligibility to receive federal transportation capital and operating assistance, and provides the environment for a continuous, cooperative, and comprehensive transportation planning process throughout the Grand Valley MPO and TPR.

Figure 3: Grand Valley MPO and Grand Valley TPR Boundaries

02. Public Participation Plan

Benefits of Public Participation

Public and stakeholder participation is important to any planning process. Effective public participation allows transportation planners to identify issues and understand aspects of the transportation system directly from the various users whose everyday lives are impacted by how they are able to get to work, home, school, stores, and services.

Public participation provides the community with an opportunity to voice concerns and offer suggestions regarding transportation-related issues. Additionally, the process helps educate the public about transportation planning and affords transportation professionals and decision-makers the opportunity to see sides of an issue that may be missed when considering a project from a purely technical or political perspective. Other benefits of public participation include:

- Developing a sense of community and ownership
- Fostering trust and accountability
- Encouraging cooperation and compromise
- Preventing and/or mitigating future conflicts

Development of the Public Participation Plan (PPP)

Updated: PPP's are often updated every five years and can be amended as needed.

Process: **Research best practices:** Initial content within the PPP is developed by RTPO staff who consider and incorporate current requirements, guidance, and research.

Partner input: A draft of the plan and any of its related content is brought before the Technical Advisory Committee.

Public input: The public has an opportunity to review and comment on a draft of the PPP. Input is carefully reviewed, considered, and acted upon accordingly.

GVRTC approval: The PPP is presented to the Grand Valley Regional Transportation Committee (GVRTC) who is the policy and decision-making body of the Grand Valley MPO. Voting members include an elected representative from the Mesa County Board of County Commissioners, the City of Grand Junction City Council, the City of Fruita City Council, and the Town of Palisade Board of Trustees.

The RTPO's Approach to Public Participation

The transportation planning public participation process involves these five components:

1. **Educate:** Provide the necessary information to understand the situation and share ideas.
2. **Engage:** Create opportunities for meaningful communication.
3. **Encourage:** Make participation easy and engaging.
4. **Include:** Listen to input and demonstrate its impact on decisions.
5. **Evaluate** the process and seek improvements.

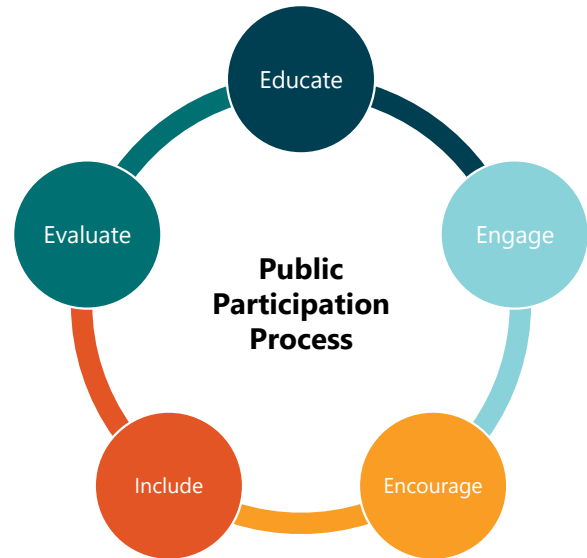


Figure 4: Public Participation Process

Public Participation Strategies Designed to Educate

Website

The RTPO manages rtpo.mesacounty.us and gvt.mesacounty.us to provide information on regional transportation planning, upcoming events, and announcements. The Colorado Department of Transportation also features regional planning information on www.codot.gov.

Media

Press releases about major projects and public meetings are sent to local TV, radio, and newspaper contacts.

Newspaper

Legal notices are published in the Daily Sentinel to announce public comment periods for documents.

Newsletter

The RTPO emails its monthly newsletter, Mobile Mesa County, to a list of contacts. The RTPO is working to grow the list and include information from partner agencies.

Flyers or Posters

Flyers and posters are displayed in public places and on buses to share information about projects and events.

Email

The RTPO uses several email lists to distribute specific content.

Postal Mailings

Mailings may be used to target specific neighborhoods or stakeholder groups to gather feedback.

Public Participation Strategies Designed to Engage**Social Media**

The RTPO uses its official "Mobile Mesa County" accounts on Facebook, Instagram, and YouTube to post project updates, share announcements, and get feedback from the public.

Public Meeting, Workshops, or Open House

The RTPO hosts various events to engage the public directly. Public meetings present information and take comments, workshops encourage collaborative problem-solving, and open houses offer a less formal setting for people to review materials and provide feedback. Events are held at different times and locations to maximize accessibility.

Presentation

RTPO staff will give presentations to local community groups, boards, and organizations upon request. Presentations allow the RTPO to bring information directly to established groups and gather targeted feedback from specific stakeholders. Presentations can be tailored to the interests of the audience and provide a platform for a direct question and answer session.

Booth at Community Events

The RTPO hosts booths at local community events, such as farmers' markets, fairs, or festivals. This approach allows the RTPO to reach a diverse audience that may not otherwise attend a formal public meeting. Staff will often have project information and surveys available to gather on-the-spot feedback and raise awareness about regional transportation issues.

Surveys

The RTPO will use surveys to gather public input on specific transportation projects, plans, and priorities. This strategy provides an efficient way to collect quantifiable data from a large number of people, which can then be used to inform planning decisions.

03. Public Participation Plan Matrix

Table 1: Public Participation Plan Matrix – Program Administration

| Program Administration | Committee Meetings Open to the Public | Website RTPO or GVT | Media Press Release, TV, Radio, or Newspaper | Newspaper Daily Sentinel Legal Notice | Newsletter Mobile Mesa County | Flyers or Posters Available in Public Places | Email Opt-in/Out Option | Postal Mailings Postcards or Letters | Social Media Facebook or Instagram | Public Meeting, Workshop, or Open House Online or In-Person | Presentation City Councils, Boards, or Community Groups | Booth at Community Events Farmers Market or Fair | Surveys Online or Paper |
|--|--|------------------------|---|--|----------------------------------|---|----------------------------|---|---------------------------------------|--|--|---|----------------------------|
| Grand Valley Regional Transportation Committee (GVRTC) | Hold regular public meetings with the GVRTC at least bi-monthly. | Yes, RTPO | | | | | Yes, GVRTC email list | | | | | | |
| Technical Advisory Committee (TAC) | Hold regular meetings with the TAC, at least quarterly, to obtain input on documents, projects, and funding determinations prior to submitting them to the Grand Valley Regional Transportation Committee (GVRTC) for consideration. | Yes, RTPO | | | | | Yes, TAC email list | | | | | | Optional, when appropriate |
| Mobile Mesa County Alliance (MMCA) | Hold regular meetings with the MMCA, at least twice a year. | Yes, RTPO | | | Optional but typical | | Yes, MMCA email list | | | | | | Optional, when appropriate |
| Mesa County Regional Transportation Safety Task Force | Hold regular meetings with the Task Force, at least quarterly. | Yes, RTPO | | | | | Yes, Task Force email list | | | | | | Optional, when appropriate |
| Unified Planning Work Program (UPWP) and Amendments | Reviewed with TAC. Reviewed with GVRTC and adopted during public meeting. | Yes, RTPO | | Optional but typical | Optional | | | | Optional | | | | |
| Metropolitan Planning Area Boundary | Reviewed with TAC. Reviewed with GVRTC and adopted during public meeting. | Yes, RTPO | Optional | Optional but typical | Optional | | | | Optional | | | | |
| Public Participation Plan (PPP) | Reviewed with TAC. Reviewed with GVRTC and adopted during public meeting. | Yes, RTPO | Optional | Optional but typical | Optional | | | | Optional but typical | | | | Optional but typical |
| Annual Report | Shared with TAC and GVRTC. | Yes, RTPO | Yes | | Optional but typical | | | | Yes | | | | |

Table 2: Public Participation Plan Matrix – Regional Transportation Planning

| Regional Transportation Planning | Committee Meetings Open to the Public | Website RTPO or GVT | Media Press Release, TV, Radio, or Newspaper | Newspaper Daily Sentinel Legal Notice | Newsletter Mobile Mesa County | Flyers or Posters Available in Public Places | Email Opt-in/Out Option | Postal Mailings Postcards or Letters | Social Media Facebook or Instagram | Public Meeting, Workshop, or Open House Online or In-Person | Presentation City Councils, Boards, or Community Groups | Booth at Community Events Farmers Market or Fair | Surveys Online or Paper |
|---|---|------------------------|---|--|----------------------------------|---|----------------------------|---|---------------------------------------|--|--|---|----------------------------|
| Long Range Plan/ Regional Transportation Plan that includes the Mesa County Coordinated Transit and Human Services Transportation Plan and Amendments | Reviewed with TAC. Reviewed with MMCA. Reviewed with GVRTC and adopted during public meeting. | Yes, RTPO | Optional but typical | Optional | Yes | Optional but typical | | | Optional but typical | Yes | Optional but typical | Yes | Optional but typical |
| Statewide Transportation Plans | Reviewed with TAC. Reviewed with GVRTC. | Yes, CDOT | | | Optional | | | | Optional but typical | | | Optional but typical | |

Table 3: Public Participation Plan Matrix – Transportation Improvement Program

| Transportation Improvement Program | Committee Meetings Open to the Public | Website RTPO or GVT | Media Press Release, TV, Radio, or Newspaper | Newspaper Daily Sentinel Legal Notice | Newsletter Mobile Mesa County | Flyers or Posters Available in Public Places | Email Opt-in/Out Option | Postal Mailings Postcards or Letters | Social Media Facebook or Instagram | Public Meeting, Workshop, or Open House Online or In-Person | Presentation City Councils, Boards, or Community Groups | Booth at Community Events Farmers Market or Fair | Surveys Online or Paper |
|---|---|------------------------|---|--|----------------------------------|---|----------------------------|---|---------------------------------------|--|--|---|----------------------------|
| Transportation Improvement Program (TIP) and Policy Amendments | Reviewed with TAC. Reviewed with GVRTC and adopted during public meeting. | Yes, RTPO | | Yes | Optional | Optional but typical on buses | | | Optional | | | | |
| Program of Projects (POP) (transit projects as a part of the TIP) | Reviewed with TAC. Reviewed with GVRTC and adopted during public meeting. | Yes, RTPO and GVT | | Yes | Optional | Optional but typical on buses | | | Optional | | | | |

Table 4: Public Participation Plan Matrix – Transportation, Transit, and Multimodal Planning

| Transportation, Transit, and Multimodal Planning | Committee Meetings Open to the Public | Website RTPO or GVT | Media Press Release, TV, Radio, or Newspaper | Newspaper Daily Sentinel Legal Notice | Newsletter Mobile Mesa County | Flyers or Posters Available in Public Places | Email Opt-in/Out Option | Postal Mailings Postcards or Letters | Social Media Facebook or Instagram | Public Meeting, Workshop, or Open House Online or In-Person | Presentation City Councils, Boards, or Community Groups | Booth at Community Events Farmers Market or Fair | Surveys Online or Paper |
|---|---|-----------------------------------|---|--|----------------------------------|---|----------------------------|---|---------------------------------------|--|--|---|----------------------------|
| Mesa County Safety Action Plan and Amendments | Reviewed with Task Force. Reviewed with GVRTC and adopted during public meeting. | Yes, RTPO | Optional but typical | Optional | Optional but typical | Optional but typical | | | Yes | Optional but typical | Optional but typical | Optional but typical | Optional, when appropriate |
| GVT Fare or Major Service Changes | Reviewed with TAC. Reviewed with MMCA. Reviewed with GVRTC and adopted during public meeting. | Yes, GVT | Optional but typical | Yes | Optional but typical | Yes, on buses | Optional | Optional, when appropriate | Yes | Yes | | | |
| Transit Asset Management Plan (TAMP) | Reviewed with TAC. Reviewed with GVRTC and adopted during public meeting. | Yes, RTPO | | | Optional | | | | Optional | | | | |
| Public Transportation Agency Safety Plans (PTASP) | Reviewed with TAC. Reviewed with GVRTC and adopted during public meeting. | Yes, RTPO | | | | | | | Optional | | | | |
| Title VI Plan | Reviewed with TAC. Reviewed with GVRTC and adopted during public meeting. | Yes, RTPO and GVT | Optional | Yes | Optional | | | | Optional | | | | |
| Strategic Plans | Reviewed with TAC. Reviewed with GVRTC and adopted during public meeting. | Yes, RTPO or GVT when appropriate | Optional but typical | Optional but typical | Optional | Optional but typical | Optional | | Optional | Optional but typical | Optional but typical | Optional but typical | Optional, when appropriate |