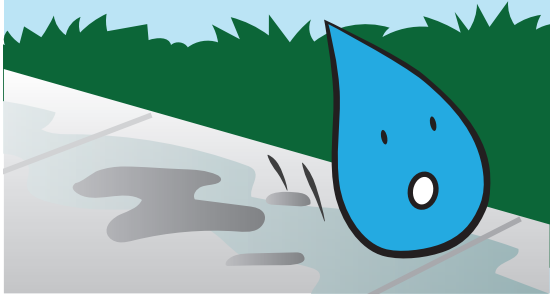


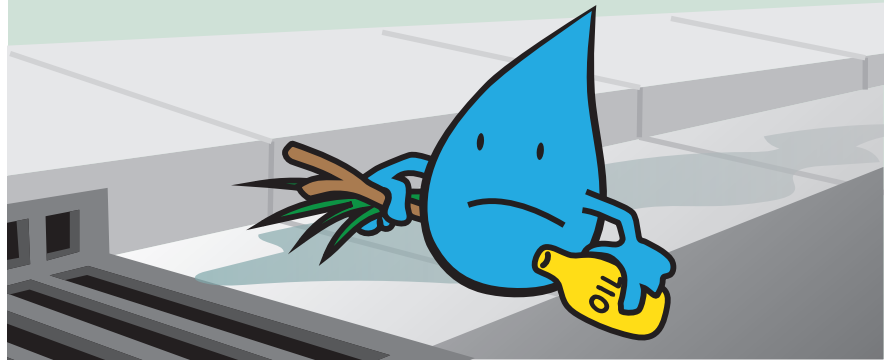
# THE LIFE OF A RAIN DROP

THE LIFE OF A RAIN DROP BEGINS AS IT FALLS FROM THE SKY UPON THE LANDSCAPES OF THE GRAND VALLEY.

AS A RAIN DROP TRAVELS TOWARDS THE STORMWATER DRAINS, IT PICKS UP CHEMICALS, FERTILIZERS AND OTHER DEBRIS FROM EVERY SURFACE THAT IT CROSSES.



THE RAIN DROP CARRIES ALL THESE POLLUTANTS AS IT MAKES ITS WAY TO THE DRAIN.



TRAVELING THROUGH THE STORMWATER DRAIN SYSTEM IN MESA COUNTY, THE RAIN DROP WILL LAND DIRECTLY INTO THE **COLORADO RIVER** OR THE **GUNNISON RIVER**. UNLIKE THE SEWER SYSTEM THE STORMWATER DRAIN DOES NOT PASS THROUGH ANY TYPE OF FILTRATION.

IF THE RAIN DROP'S PATH WAS CLEAR AND FREE OF DEBRIS, TRASH AND POLLUTANTS, IT ENTERS THE RIVER AND PROVIDES CLEAN WATER, SAFE RECREATION AND HEALTHY WILDLIFE HABITAT.



IF THE RAIN DROP ENTERS THE RIVER CARRYING UNWANTED POLLUTANTS, OUR RIVERS BECOME FILLED WITH ALGAE AND TOXINS AND OUR WILDLIFE HABITATS BECOME ENDANGERED.



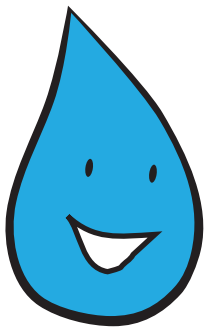
**Every drop makes a difference!**

Help keep our rivers clean by keeping driveways, sidewalks and stormwater drains clear and free of pollutants and debris.

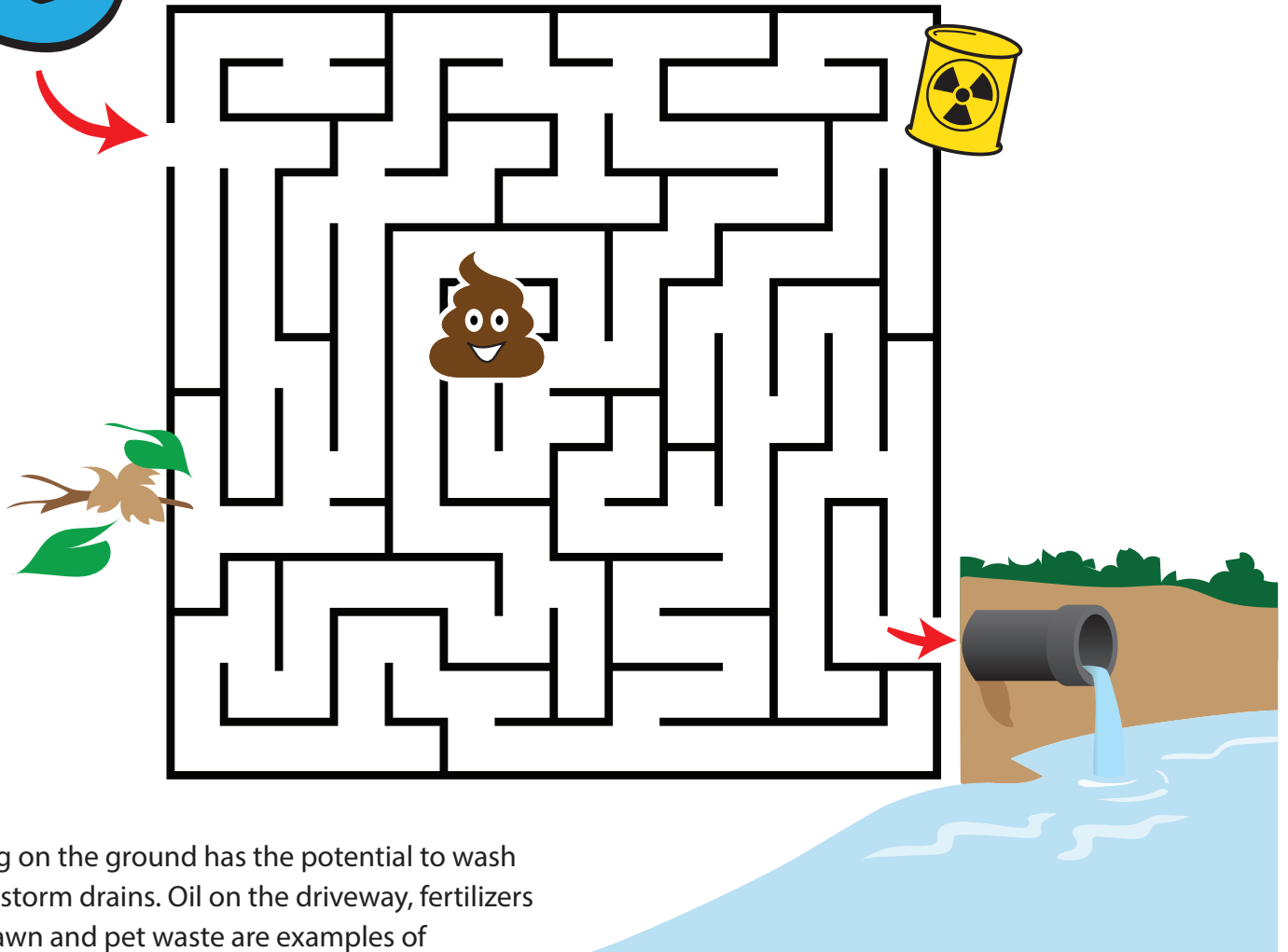


**MESA COUNTY**  
PUBLIC WORKS STORMWATER DIVISION

**Protecting Our Rivers.**



*Help the rain drop find the best way to the Colorado River.  
Watch out for harmful toxins along the way!*



Anything on the ground has the potential to wash into the storm drains. Oil on the driveway, fertilizers on the lawn and pet waste are examples of pollutants that get washed into our storm drains when it rains. These pollutants are then dumped directly into our rivers without any filtration or treatment. How can you help keep our rivers clean? Follow the tips below for best stormwater management practices at home.

### **Tips for cleaner rivers:**

1. Pick up all pet waste to help keep stormwater clean.
2. Do not fertilize your lawn right before it rains. Fertilizer is high in phosphorous and causes algae blooms and fish kills in our rivers.
3. Wash your car at a commercial car wash to prevent soap and chemicals from washing into the storm drains.
4. Pick up leaves and other lawn waste instead of blowing them into the gutters to be washed down the storm drain.



**Report illegal dumping and hazardous spills to the Mesa County Stormwater Hotline:**

**970-263-8201**



**MESA COUNTY**  
PUBLIC WORKS STORMWATER DIVISION

***Protecting Our Rivers.***