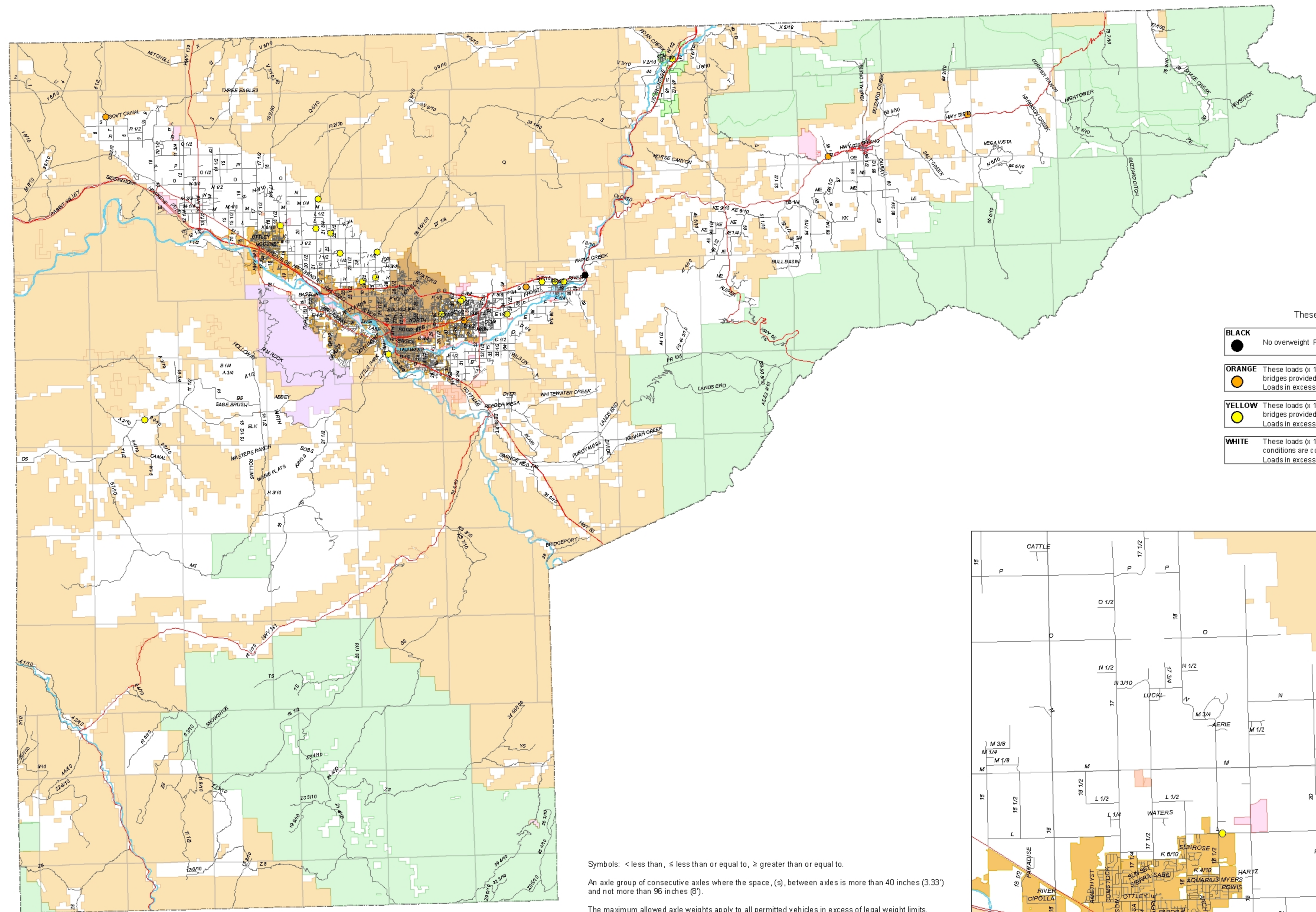


Load Limit Map

Exhibit 1

0 5 10 15 20 25 30 35 40 45 50 55 60 65 70 75 80 85

Y
T
O
J
E
A
FS
KS
PS
US
ZS
ZS
Z10



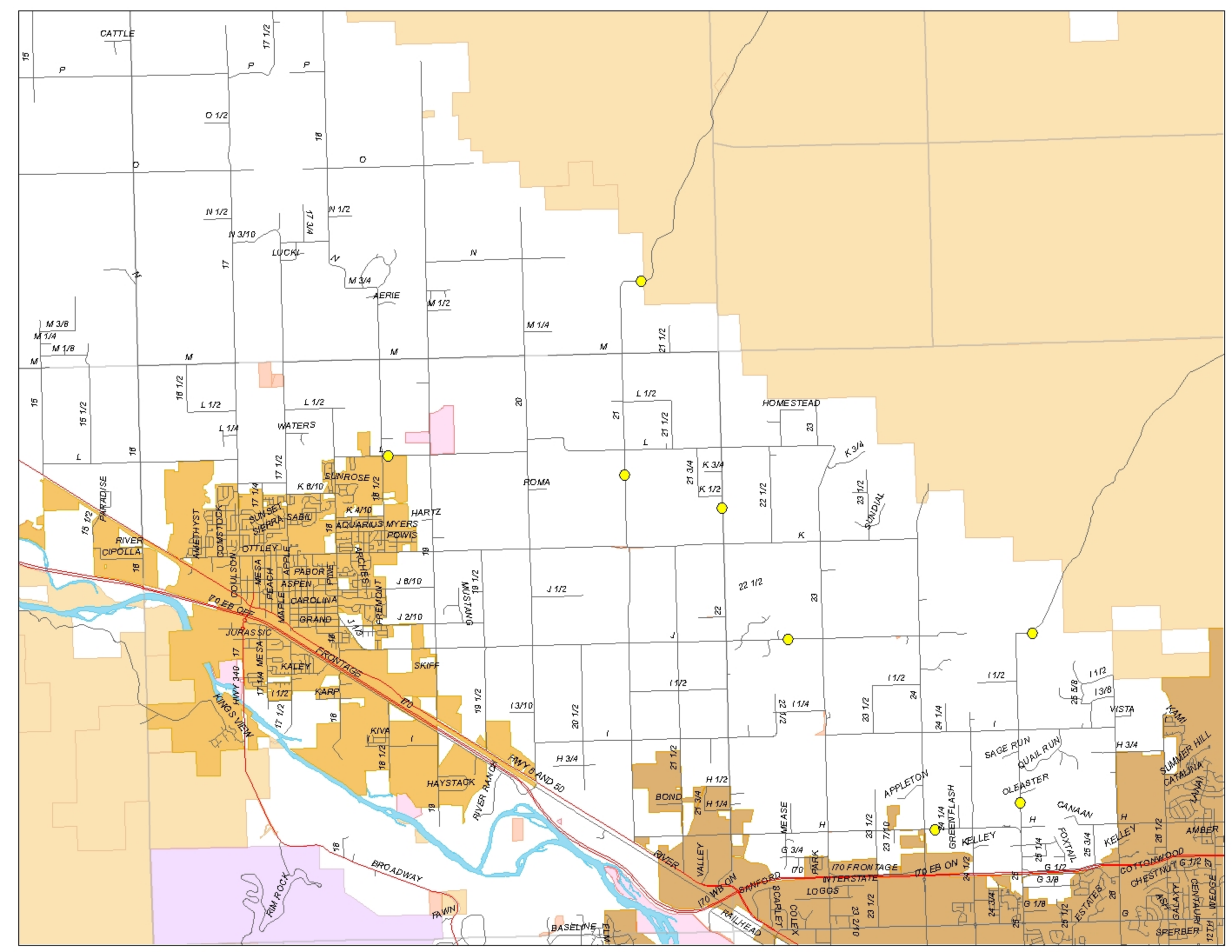
Permit Weights
These loads can not cross load posted structures.

- BLACK** No overweight Permits allowed.
- ORANGE** These loads (x 1,000 pounds) may cross ORANGE, YELLOW, and WHITE county bridges provided all conditions are complied with for every structure on the route. Loads in excess of these limits may not cross BLACK or ORANGE bridges.
- YELLOW** These loads (x 1,000 pounds) may cross ORANGE, YELLOW, and WHITE county bridges provided all conditions are complied with for every structure on the route. Loads in excess of these limits may not cross BLACK or ORANGE bridges.
- WHITE** These loads (x 1,000 pounds) may cross WHITE county bridges only, provided all conditions are complied with for every structure on the route. Loads in excess of these limits may not use Mesa County Roads.

Symbols: < less than, ≤ less than or equal to, ≥ greater than or equal to.
An axle group of consecutive axles where the space, (s), between axles is more than 40 inches (3.33') and not more than 96 inches (8').
The maximum allowed axle weights apply to all permitted vehicles in excess of legal weight limits.
The smallest distance, (d), between adjacent axle groups shall be used to determine the maximum allowed axle weights for those axle groups.
NOTE: All loads greater than the 130,000 pounds require a Special Permit.

Maximum Allowable Permit Weight per Axle Group (x 1000 pounds)

Distance (d) Between Axle Groups		Distance (d) Between Axle Groups		Distance (d) Between Axle Groups		Distance (d) Between Axle Groups		Distance (d) Between Axle Groups		Axle Groups
8' < d < 10'	10' ≤ d ≤ 12'	10' < d < 12'	12' ≤ d < 14'	14' ≤ d < 16'	16' ≤ d < 18'	18' ≤ d < 20'	20' ≤ d < 22'	22' ≤ d < 24'	24' ≤ d < 26'	
Orange	Yellow	White	Orange	Yellow	White	Orange	Yellow	White	Orange	Single Axle
22	25	27	22	25	27	22	25	27	27	O
36	39	43	39	43	47	42	46	50	50	Tandem Axle
49	53	58	53	58	63	55	60	65	65	O O
52	57	62	57	62	68	60	66	72	72	Triple Axle
										O O O
										Four or more Axle
										O O O O



Legend

- Rivers
- Local Roads
- Palisade
- Debeque
- Collbran
- Fruita
- Grand Junction
- Monument
- National Forest
- BLM
- State Land
- County Property
- Township
- County Line
- Federal & State HWYS

0 1 2 4 6 8 10 12 Miles