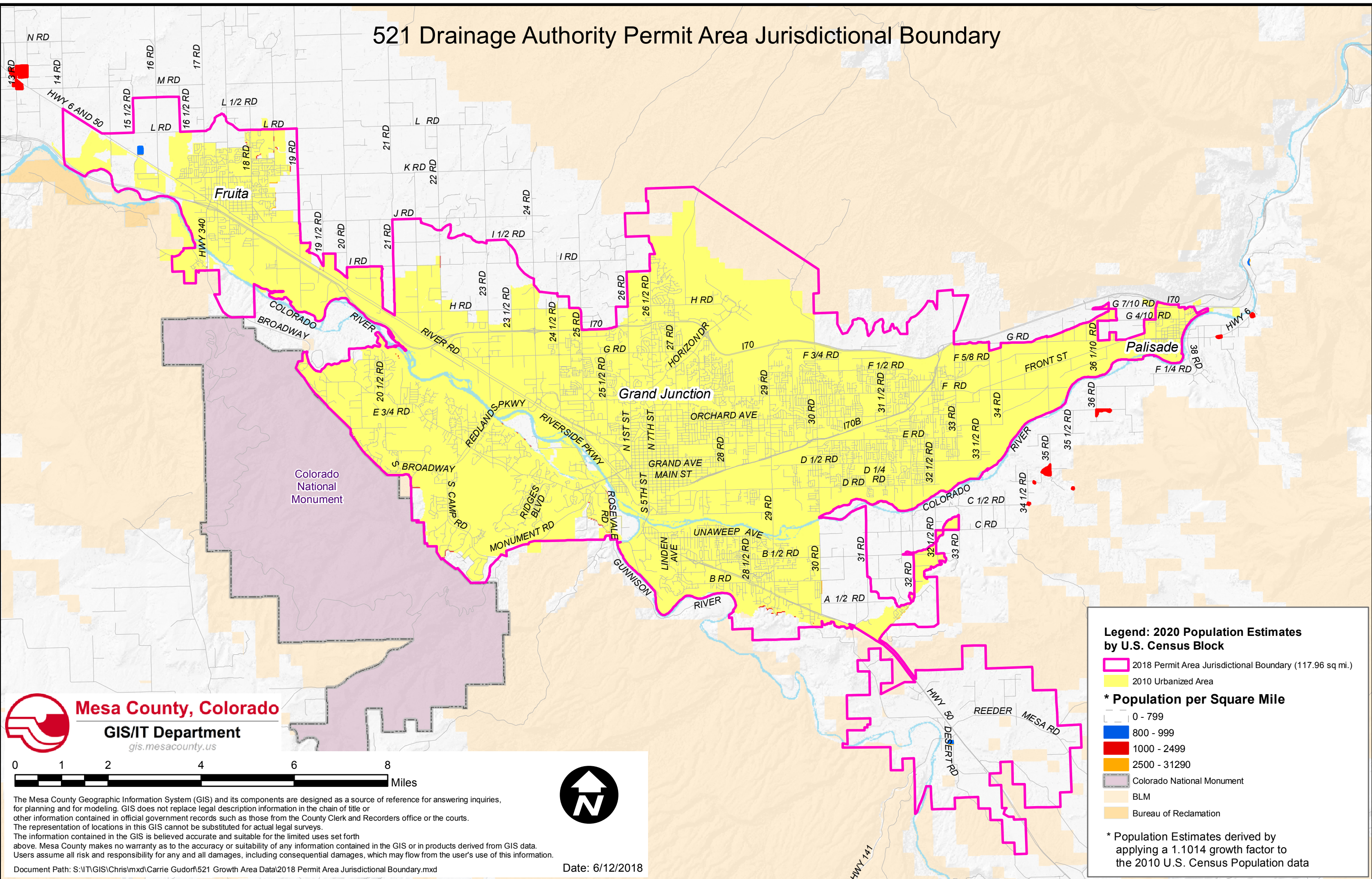


# 521 Drainage Authority Permit Area Jurisdictional Boundary



**Mesa County, Colorado**  
**GIS/IT Department**  
 gis.mesacounty.us



The Mesa County Geographic Information System (GIS) and its components are designed as a source of reference for answering inquiries, for planning and for modeling. GIS does not replace legal description information in the chain of title or other information contained in official government records such as those from the County Clerk and Recorders office or the courts. The representation of locations in this GIS cannot be substituted for actual legal surveys. The information contained in the GIS is believed accurate and suitable for the limited uses set forth above. Mesa County makes no warranty as to the accuracy or suitability of any information contained in the GIS or in products derived from GIS data. Users assume all risk and responsibility for any and all damages, including consequential damages, which may flow from the user's use of this information.

Document Path: S:\IT\GIS\Chris\mxd\Carrie Gudorf\521 Growth Area Data\2018 Permit Area Jurisdictional Boundary.mxd

Date: 6/12/2018

**Legend: 2020 Population Estimates by U.S. Census Block**

- 2018 Permit Area Jurisdictional Boundary (117.96 sq. mi.)
- 2010 Urbanized Area

**\* Population per Square Mile**

- 0 - 799
- 800 - 999
- 1000 - 2499
- 2500 - 31290
- Colorado National Monument
- BLM
- Bureau of Reclamation

**\* Population Estimates derived by applying a 1.1014 growth factor to the 2010 U.S. Census Population data**