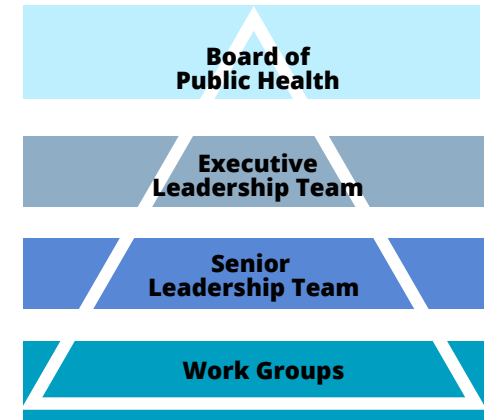


Decision-making Structure



Mesa County Public Health is the Fiscal Agent for Mesa County Partnership for Children and Families. This includes operational support like providing legal, operational, fiscal, and human resources.

Child and Adult Care Food Program (CACFP)
 Early Childhood Council
 Health Inspections
 Licensing
 Universal Preschool

Work groups

Work groups support quality improvement functions and allow all employees opportunities to impact whole Agency goals.



Leadership team designations

 **Executive Leadership Team**

 **Senior Leadership Team**

One delegate from the Senior Leadership Team appointed for 1-year terms to sit on the Executive Leadership Team.