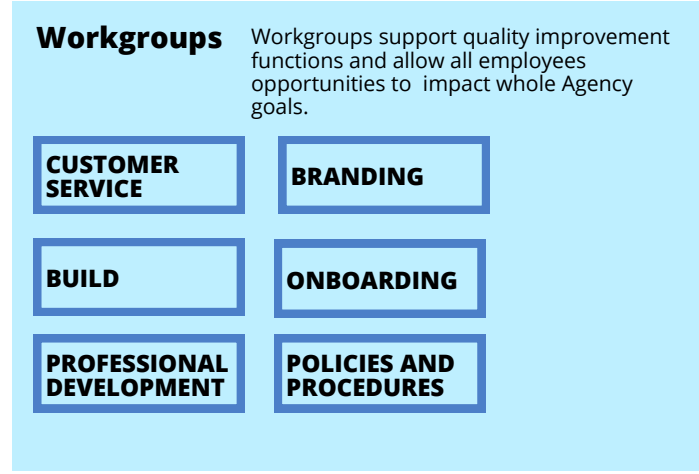
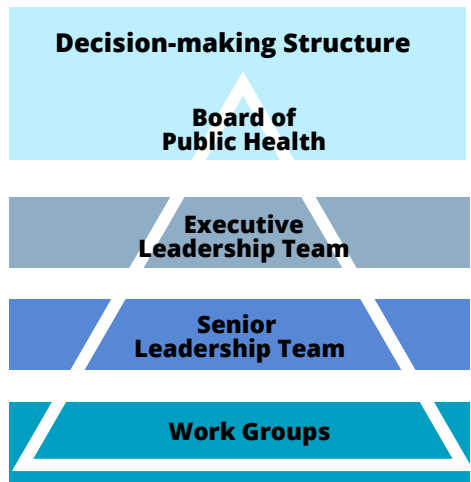
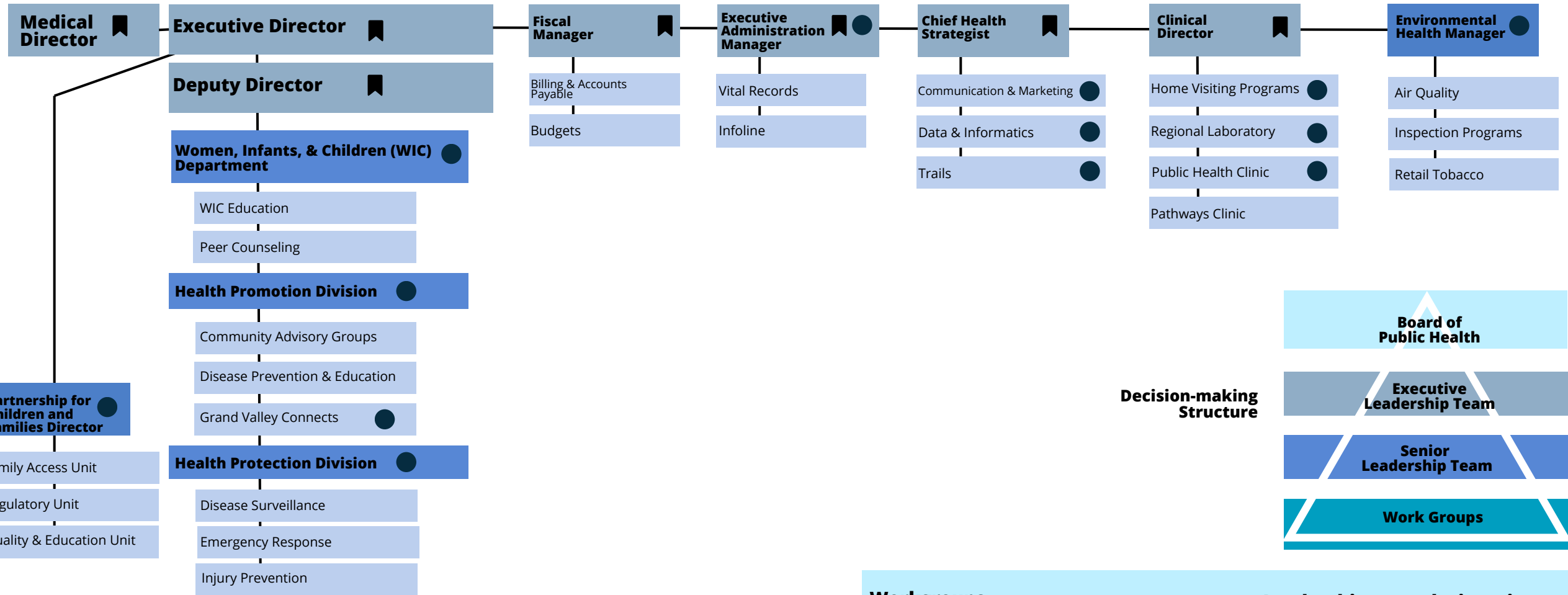


Mesa County Public Health is the Fiscal Agent for Mesa County Partnership for Children and Families. This includes operational support like providing legal, operational, fiscal, and human resources.

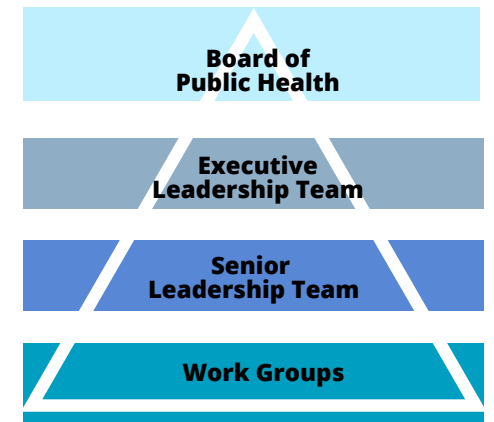


**Board of County Commissioners**

**Board of Public Health**



**Decision-making Structure**



### Workgroups

Workgroups support quality improvement functions and allow all employees opportunities to impact whole Agency goals.

- BRANDING
- BUILD
- CUSTOMER SERVICE
- ONBOARDING
- POLICY & PROCEDURE
- PROFESSIONAL DEVELOPMENT

### Leadership team designations

 **Executive Leadership Team**

 **Senior Leadership Team**

One delegate from the Senior Leadership Team appointed for 1-year terms to sit on the Executive Leadership Team.

Mesa County Public Health is the Fiscal Agent for Mesa County Partnership for Children and Families. This includes operational support like providing legal, operational, fiscal, and human resources.

- Child and Adult Care Food Program (CACFP)
- Early Childhood Council
- Health Inspections
- Licensing
- Universal Preschool



**Board of County Commissioners**

**Board of Public Health**

**Medical Director**

**Executive Director**

**Deputy Director**

**Women, Infants, & Children (WIC) Department**

WIC Education

Peer Counseling

**Health Promotion Division**

Community Advisory Groups

Disease Prevention & Education

Grand Valley Connects

**Health Protection Division**

Disease Surveillance

Emergency Response

Injury Prevention

**Partnership for Children and Families Director**

Family Access Unit

Regulatory Unit

Quality & Education Unit

**OPERATIONS DEPARTMENT**

**Fiscal Manager**

Billing & Accounts Payable

Budgets

**Executive Administration Manager**

Vital Records

Infoline

**INFORMATION & STRATEGY DEPARTMENT**

**Chief Health Strategist**

Communication & Marketing

Data & Informatics

Trails

**CLINICAL SERVICES DEPARTMENT**

**Clinical Director**

Home Visiting Programs

Regional Laboratory

Public Health Clinic

Pathways Clinic

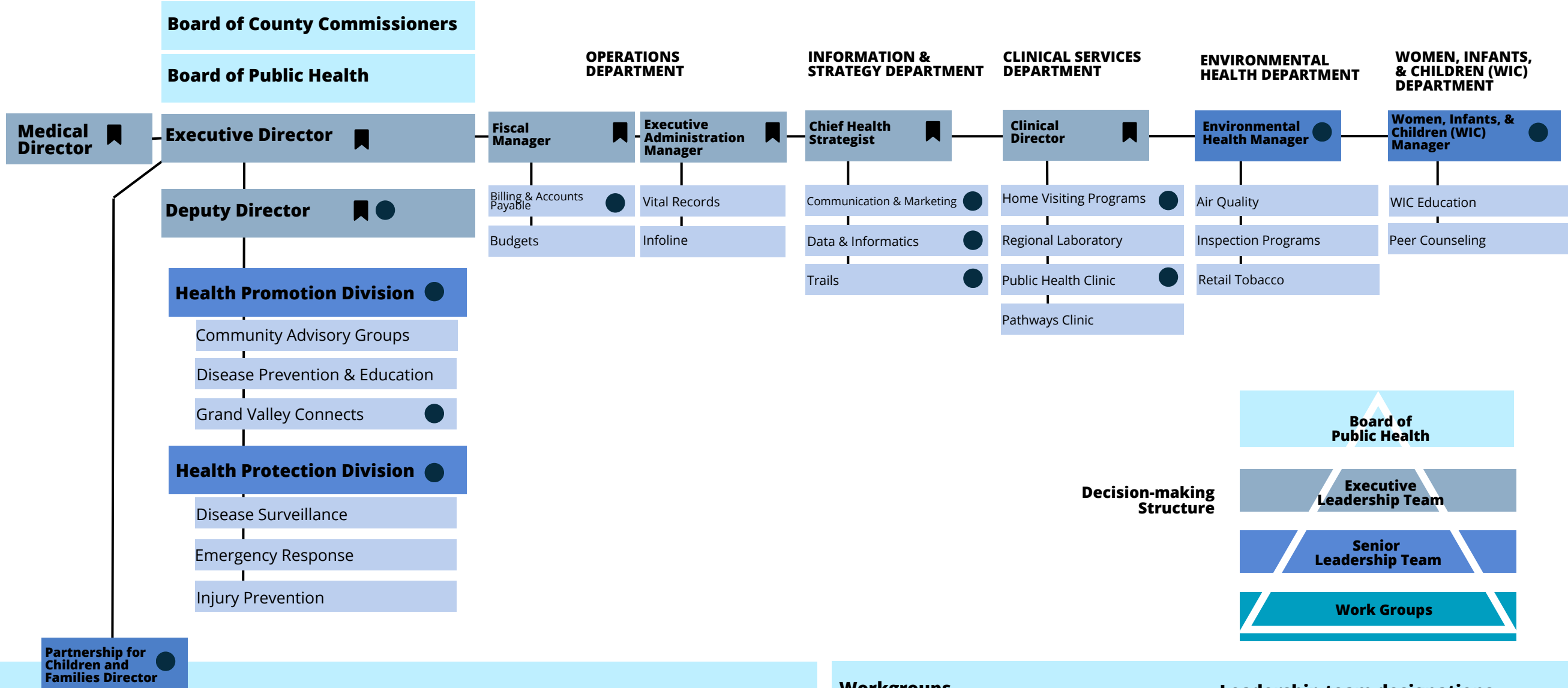
**ENVIRONMENTAL HEALTH DEPARTMENT**

**Environmental Health Manager**

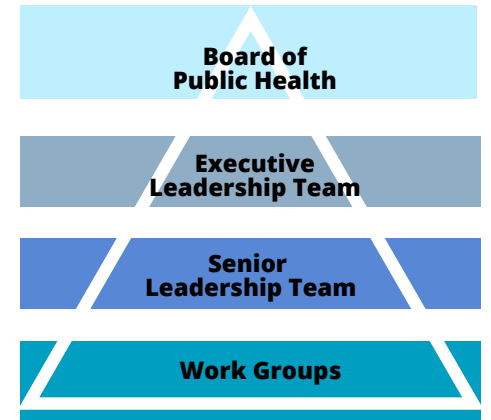
Air Quality

Inspection Programs

Retail Tobacco



### Decision-making Structure



Mesa County Public Health is the Fiscal Agent for Mesa County Partnership for Children and Families. This includes operational support like providing legal, operational, fiscal, and human resources.

Child and Adult Care Food Program (CACFP)  
 Early Childhood Council  
 Health Inspections  
 Licensing  
 Universal Preschool

### Workgroups

Workgroups support quality improvement functions and allow all employees opportunities to impact whole Agency goals.

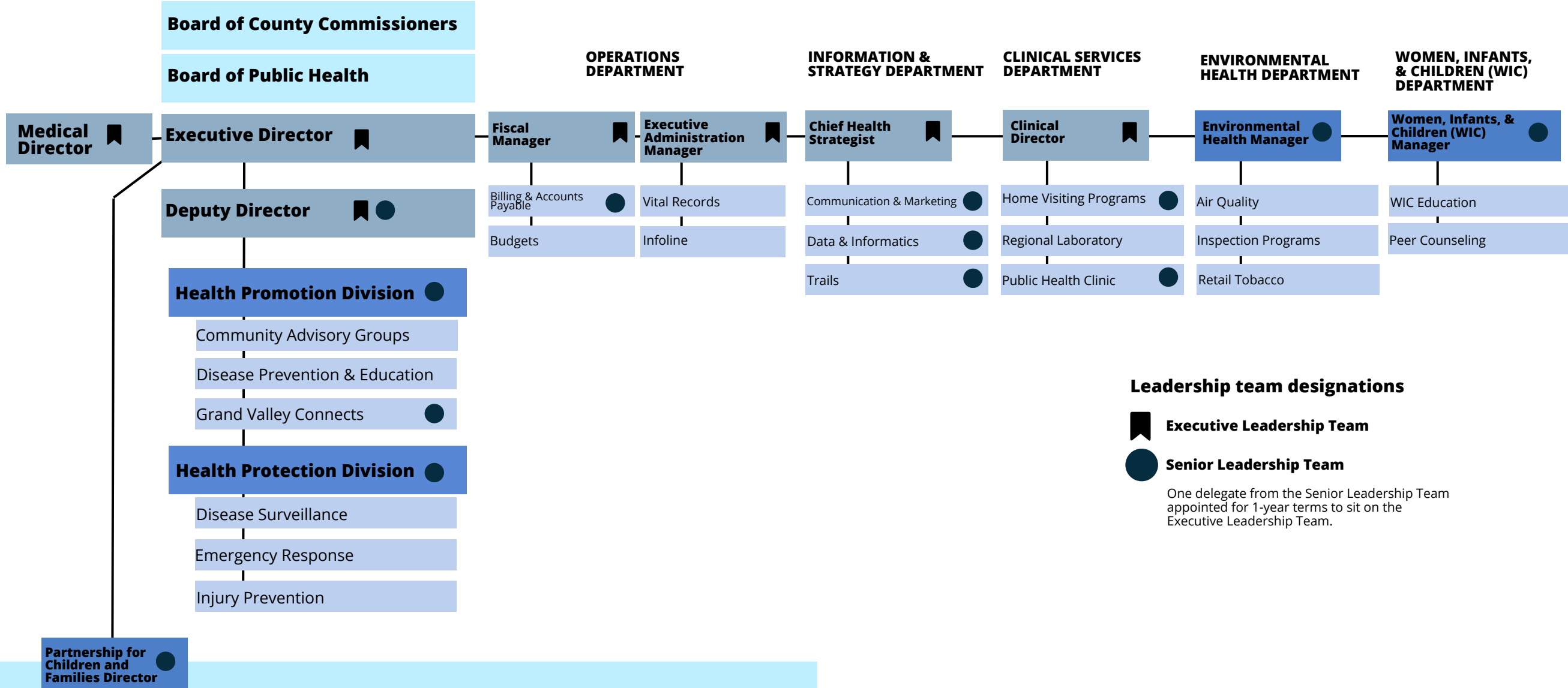


### Leadership team designations

 **Executive Leadership Team**

 **Senior Leadership Team**

One delegate from the Senior Leadership Team appointed for 1-year terms to sit on the Executive Leadership Team.

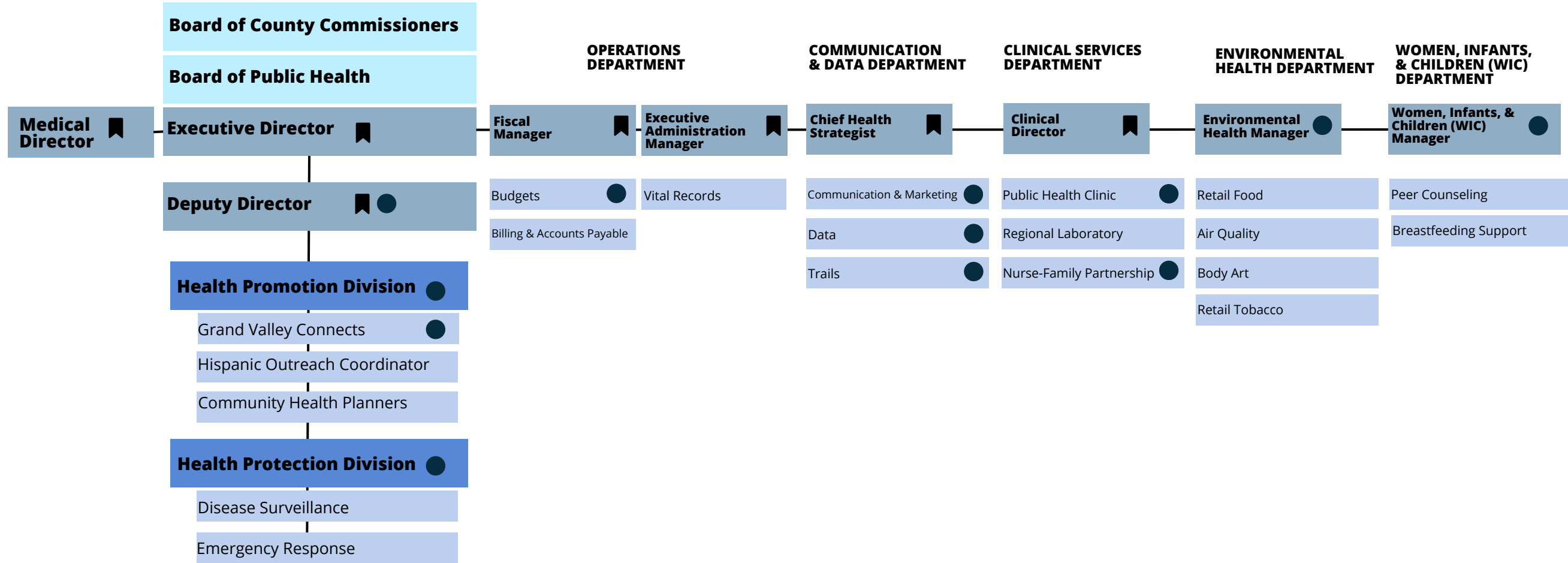


### Leadership team designations

 **Executive Leadership Team**

 **Senior Leadership Team**

One delegate from the Senior Leadership Team appointed for 1-year terms to sit on the Executive Leadership Team.



● Mesa County Public Health is the Fiscal Agent for Mesa County Partnership for Children and Families. This includes operational support like providing legal, operational, fiscal, and human resources.

CACFP  
 Early Childhood Council  
 Licensing  
 Health Inspections  
 Universal Preschool

### Work groups

Work groups support quality improvement functions and allow all employees opportunities to impact whole Agency goals.

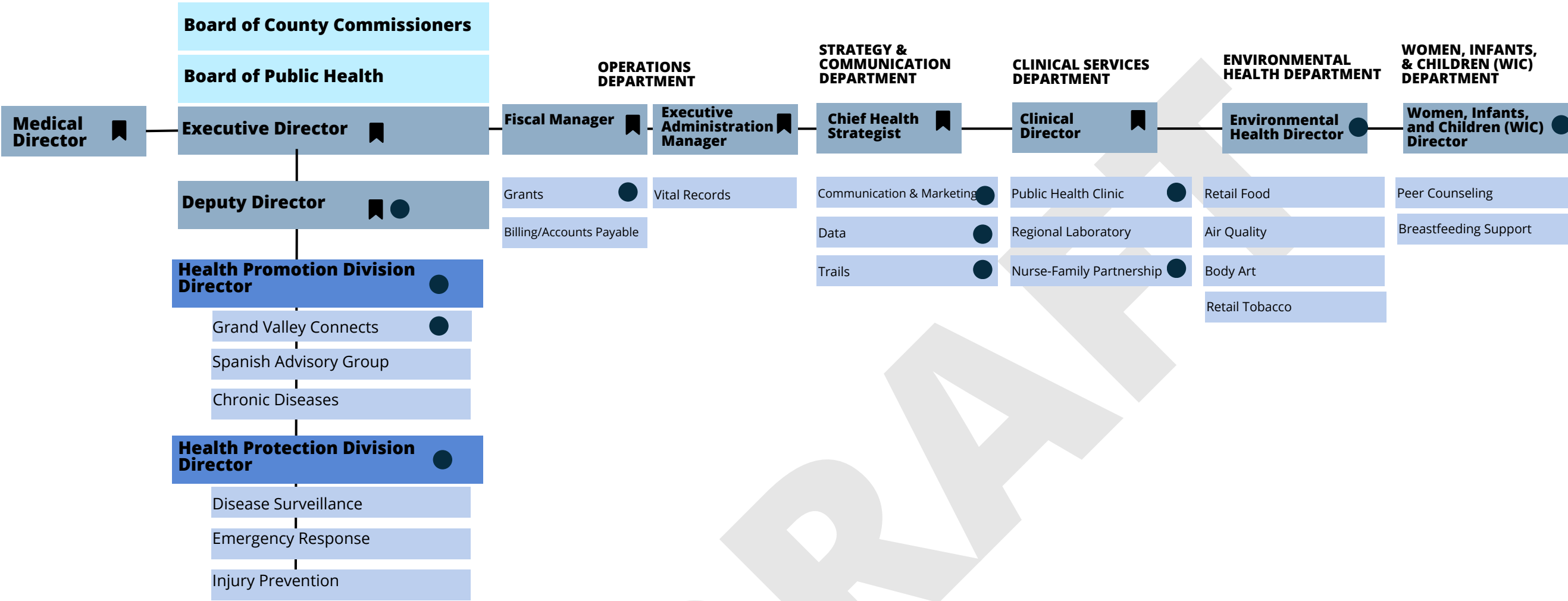


### Leadership team designations

📖 **Executive Leadership Team**

● **Senior Leadership Team**

One delegate from the Senior Leadership Team appointed for 1-year terms to sit on the Executive Leadership Team.



Mesa County Public Health is the Fiscal Agent for Mesa County Partnership for Children and Families. This includes operational support like providing legal, operational, fiscal, and human resources.

- CACFP
- Early Childhood Council
- Licensing
- Health Inspections
- Universal Preschool

### Work groups

Work groups support quality improvement functions and allow all employees opportunities to impact whole Agency goals.

<b>BUILD</b>	<b>CUSTOMER SERVICE</b>	<b>ONBOARDING</b>
<b>POLICY &amp; PROCEDURE</b>	<b>PROFESSIONAL DEVELOPMENT</b>	

### Executive Leadership Team

#### Senior Leadership Team

One delegate from the Senior Leadership Team appointed for 1-year terms to sit on the Executive Leadership Team.

**Executive Leadership Team**

**Senior Leadership Team**

**Work groups**

**Work groups**

Work groups support quality improvement functions and allow all employees opportunities to impact whole Agency goals.

<b>BUILD</b>	<b>CUSTOMER SERVICE</b>	<b>ONBOARDING</b>
<b>POLICY &amp; PROCEDURE</b>	<b>PROFESSIONAL DEVELOPMENT</b>	



**Executive Leadership Team**



**Senior Leadership Team**

One delegate from the Senior Leadership Team appointed for 1-year terms to sit on the Executive Leadership Team.